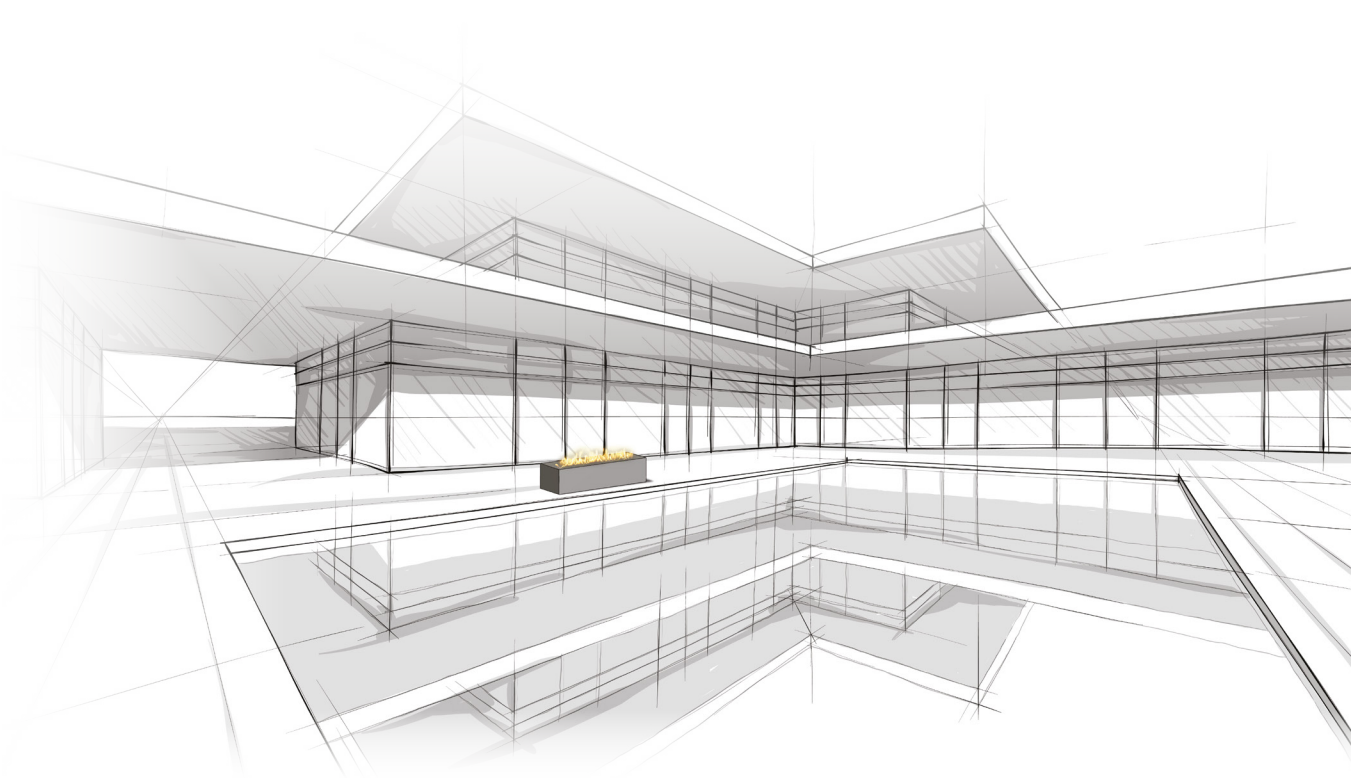


outdoor



© PLANIKA | Ver. 03072017

www.PLANIKAfires.com

Galio Fire Pit Insert outdoor

Galio Fire Pit Insert

*A circular insert providing unlimited arrangement possibilities
Awaken your outdoor space with natural fire*



FEATURES:

- For outdoor use
- Easy installation
- Flame height regulation
- Fire pit shape burner
- LPG or natural gas powered
- Safety sensor
- No electrical connection required
- CE certified components

TECHNICAL DATA:

Net weight: 15 kg / 33 lbs

LPG

Heat output net: min. 2,5 kW (8 649 BTU); max. 5,1 kW (17 299 BTU)

Gas rate: min. 0,2 kg/h (0,44 lbs/h); max. 0,4 kg/h (0,88 lbs/h)

Gas pressure: 37 mbar/11" WC

NG

Heat output net: min. 2,4 kW (8 054 BTU); max. 4,7 kW (16 108 BTU)

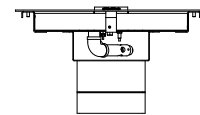
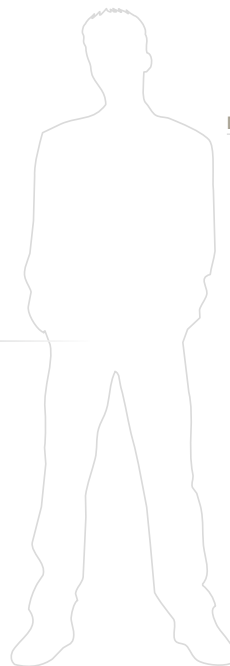
Gas rate: min. 0,25 m³/h (8,8 ft³/h); max. 0,5 m³/h (17,7 ft³/h)

Gas pressure: 20 mbar/7" WC

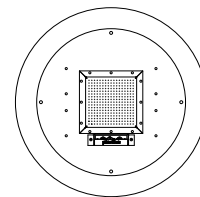
Finish:

stainless steel

DIMENSIONS:



246 mm
9 11/16"



450 mm
19 11/16"

INSTALLATION REQUIREMENTS:

